

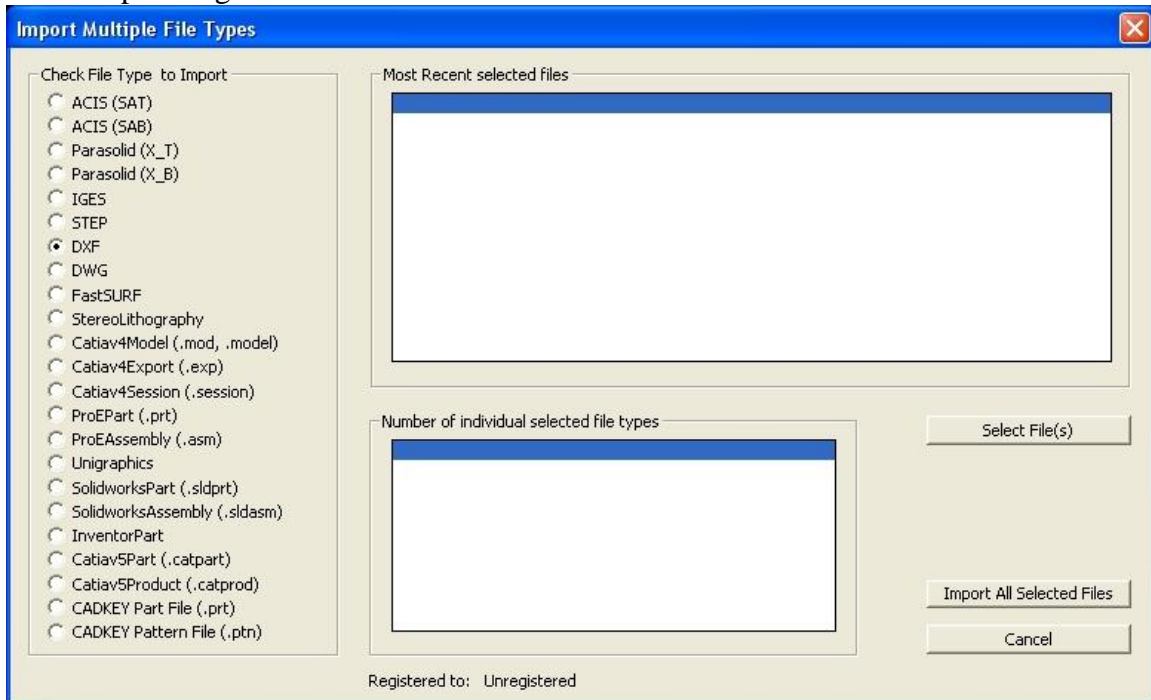
ImportMultipleFiles program for KeyCreator 8.X only!

Use this program at your own risk!

Program description:

This program imports multiple files. You can select multiple files of the same type or mix any number of different selected files and import them into the same drawing. Make sure the program GetDirectoryFileNames.exe is in the KXL directory. That program (which is written in VB.net) enables you to select multiple files by standard Windows selection techniques.

The Setup Dialog Box



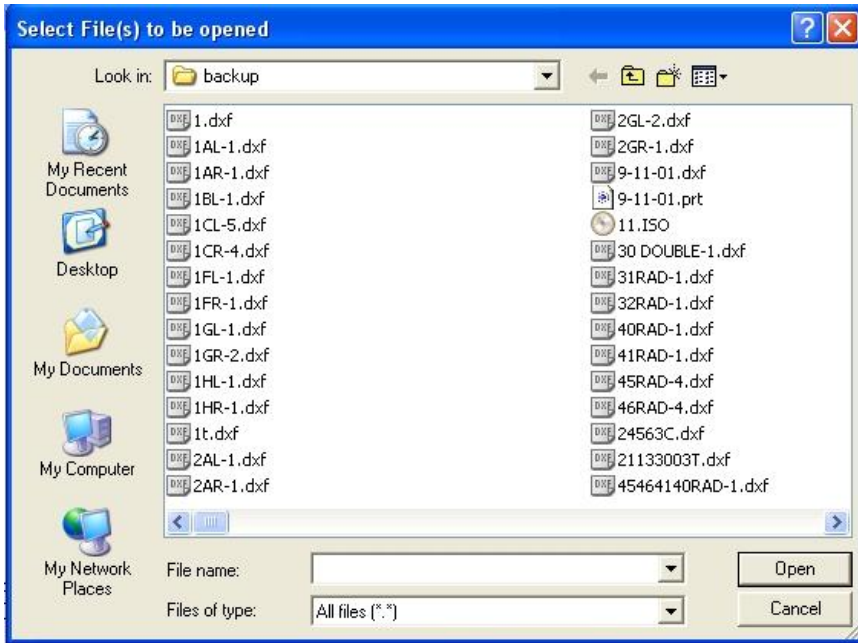
Below is some additional help; items that are self explanatory are not listed.

Check File type to import:

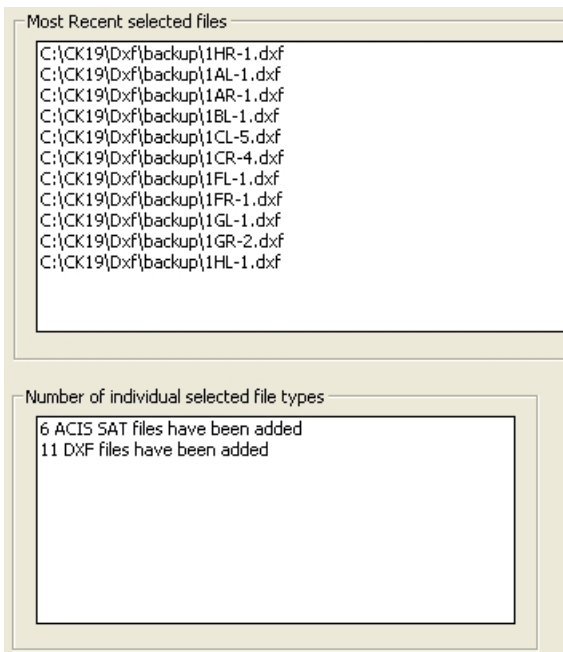
First select a file type that you want to import.

Select File(s):

Press the Select File(s) button; a Dialog box will open which lets you select a single or multiple files of that type.



Hold down the Ctrl or Shift key to select multiple files, and then press Open. All the selected files will appear in the Most Recent selected files pane. The Number of individual selected file types keeps track of the selected file packages as shown below:



In the above case 6 ACIS files have been selected at first, then the 11 DXF files

Import all selected files:

Pressing this button will import all files into the currently open CKD file