

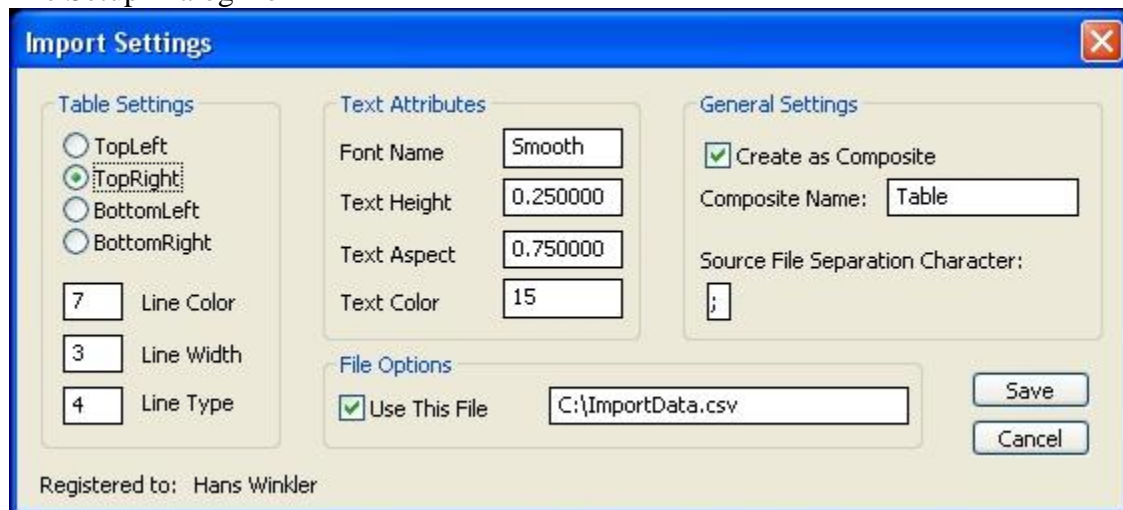
ImportExcelFiles program for KeyCreator 8.X only!

Use this program at your own risk!

Program description:

This program imports a data file organized in rows and columns separated by a definable character like a comma or semi colon. Once the file is selected the text height will drive the size of the table. Placement can be achieved by any of the four corners of the table. The setup dialog box will remember the settings.

The Setup Dialog Box



Below is some additional help; items that are self explanatory are not listed.

Table Settings:

Here you can set up the line attributes and the placement of the table.

Text Attributes:

Here you can set the text attributes that populate the table.

General Settings:

Here you can specify whether the table is to be created as a composite, and if so add the composite name. You also must enter the separation character that separates the words in the data file. Empty placeholders in the data file are allowed e.g.

Quantity;Material;Vendor;;;Remarks, however when the table is imported into KeyCreator, the empty placeholders are converted to dashes.

File Options:

Here you can specify a permanent data file path. If checked the program will always try to open the specified file for import. Should the file not exist, a File Open Dialog will aid in the selection of the data file.