

## HoleChart program for KeyCreator 8.X only!

Use this program at your own risk!

### **Program description:**

This program creates a Chart of hole locations in a table. Table size is driven by the font height, the labels at the holes can be customized for location and size. A label can be placed at the Datum origin. Several more attributes like color and others can be adjusted. All settings are remembered once the OK button is pressed.

The Setup Dialog Box

**Hole Chart Utility**

**Hole Labeling Settings**

Prefix:

Increment Start:

Increment by:

Character Height:

Text X Offset:

Text Y Offset:

**Search Diameter Setting**

Any Diameter

Specific Diameter

Hole Diameter:

Tolerance ± :

**Color Settings**

Header Color #:

Num Column Color #:

'X' Column Color #:

'Y' Column Color #:

'Z' Column Color #:

'Ø' Column Color #:

Table Color #:

Hole Note Color #:

**Table Output Options**

Display 'Z' value

Display Hole Diameter

Character Height:

Precision:

X

.X

.XX

.XXX

.XXXX

**Datum Option**

Put Label at Datum Position

Label Color #:

Registered to:  
Unregistered

OK Cancel

Below is some additional help; items that are self explanatory are not listed.

## Hole Labeling Settings:

If Character Height is set to zero, the current system Note height is used, otherwise you can enter your custom height.

Text X and Y Offset are the distances where the label is placed inside the Circle.

Negative values are acceptable.



## Table Output Options:

Display 'Z' value  $\mathfrak{a}$  adds the 'Z' depth value of the circle to the table output as a column.

Display Hole Diameter  $\mathfrak{a}$  adds the Hole Diameter value of the circle to the table output as a column.

If Character Height is set to zero, the current system Note height is used, otherwise you can enter your custom height. The Table will adjust in size according to this Character Height value.

Precision: Number of decimals to be output. Valid are no decimals to 4 decimals after the point.

Example Table Output:

Num	X	Y	Z	$\phi$
A1	-7.796	-0.479	0.000	2.000
A2	-4.058	1.217	0.000	2.225
A3	-4.875	-2.326	0.000	3.600

## Search Diameter Setting:

Any Diameter: Will process any selected Circle of any size.

Specific Diameter: Will process selected Circles of specific size inside a tolerance range.

## Datum Option:

Put a Label at Datum position: If checked the arrow tip of the label will point to the Datum Position. All circle/hole locations are calculated from that position. The Prefix from the Hole Labeling Settings is added as a description to identify the Datum Position with the Hole Chart.



## Color Settings:

If Colors are set to zero, the current system Color is used, otherwise you can enter your custom Color number.

## Registration Information:

You will be given the opportunity to register the program at every startup. The following Dialog will appear:



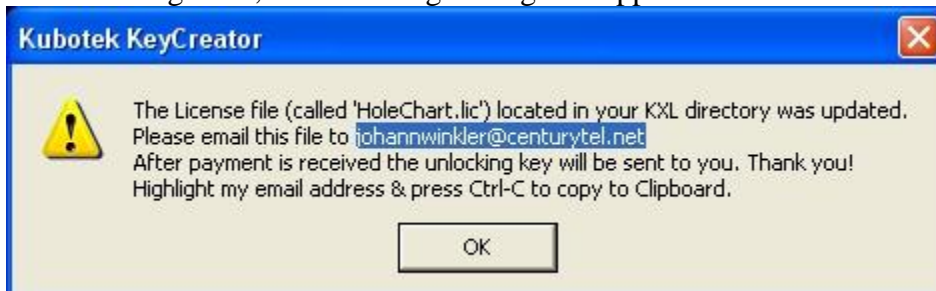
If you click No you are in Trial mode. Trial mode works for **5 days** after your first startup.

If you click Yes, the following Dialog will appear:



Follow the description in the Dialog by entering your name and pressing the Save button.

After clicking Save, the following Dialog will appear:



**Do not overwrite or edit the HoleChart.lic file, or the registration will fail.**

After payment is received the unlocking key will be emailed to you. When you receive the unlocking key, simply fill in your name and your unlocking key and press Register. Remember that Name and unlocking key are case sensitive.

**Cost:**

This program may be purchased for \$19.95 US Dollars